

TOKYO TOWER

ENGLISH

TOP DECK (250m)



The Top Deck Tour is the V.I.P experience of Tokyo Tower. This tour offers you access to the 150m observation deck known as the "Main Deck" and to the 250m "Top Deck". Our pre-booking system allows you to participate in the tour with a minimum waiting time. A multilingual voice guide explains you the most interesting facts of the city landmarks in 13 different languages. Welcome drink service and a photo-card are included in the Tour. Most importantly, during this tour you'll be able to experience the worldwide recognized "omotenashi" (Japanese hospitality) from our attendants.

During the Top Deck Tour you'll experience Tokyo Tower's history, while riding the glass-paneled elevator up to the Top Deck that shows panoramic views of the contemporary Tokyo, once at the top, geometric mirrors and LED lights will immerse them in a futuristic atmosphere of the city. Don't miss it!

BOOK YOUR TICKETS HERE <https://tdt.tokyotower.co.jp/en/index.html>

*Depending on availability, on same-day tickets might be sold at the ticket booth.

TOP DECK TOUR FLOW



01/

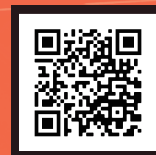
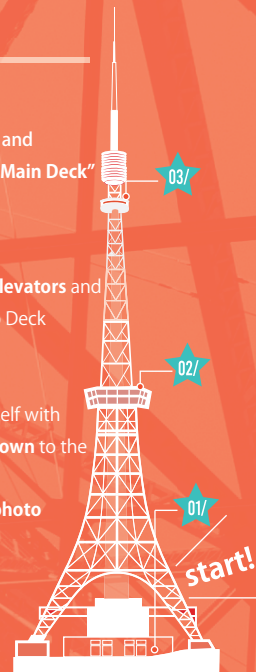
Show your Top Deck Tour ticket Qr code for easy and preferential access at the "Foot Town" 1st floor "Main Deck" elevator entrance.

02/

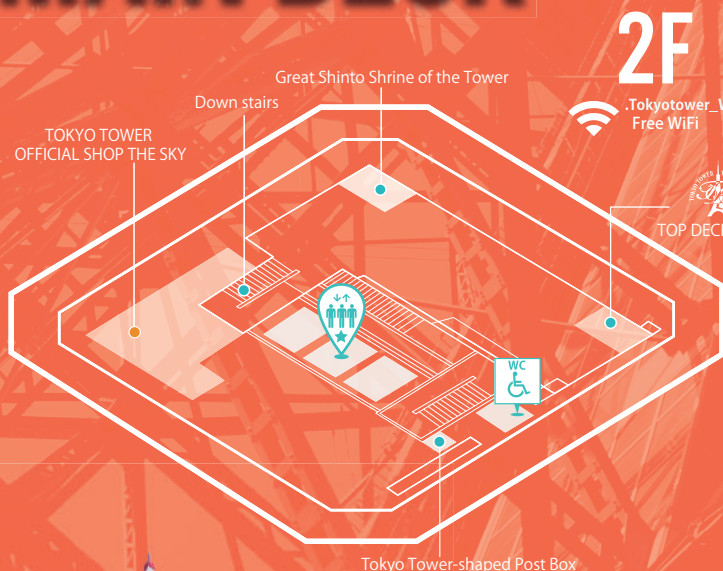
Once you stop at the 150m Main Deck, change elevators and get access to the elevator that gets you to the Top Deck

03/

Enjoy your time at the **Top Deck** and amaze yourself with the breathtaking views of the city. **On your way down** to the exit you'll be able to **explore the Main Deck**. Before going home don't forget to **pick up your photo card** at the Photo counter (3rd floor)



MAIN DECK (150m)



2F



TOP DECK TOUR GATE



1F



CONTACT

TOKYO TOWER
4-2-8 Shiba Koen, Minato-ku, Tokyo
Tel. +81-03-3433-5111
<https://www.tokyotower.co.jp/en/>



@nopponotouto



@tokyotower.official



@tokyotower_official



<https://onlineshop.tokyotower.co.jp/>



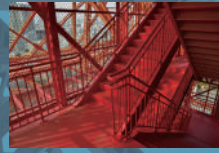
FOOT TOWN

Stairs to the Main Deck



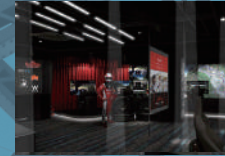
RF

★ STAIRS COURSE ENTRANCE



5F

★ RED TOKYO TOWER ULTIMATE ZONE



4F

★ RED TOKYO TOWER ATTRACTION ZONE



OBSERVATION DECKS ELEVATORS



FOOT TOWN (BUILDING) ELEVATORS



"STAIRS COURSE" TO THE MAIN DECK



RESTROOMS



ESCALATORS



ATM



SHOPPING & OBSERVATION DECKS



FOOD/DRINKS



.Tokyotower_Wifi Free Wifi

RED TOKYO TOWER Ticket counter and entrance

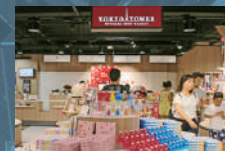


3F

★ RED TOKYO TOWER (入場口) INSPIRATION ZONE

★ OFFICIAL SHOP & CAFE

★ TOWER GALLERY



2F

★ SOUVENIR SHOPS

★ FOOD COURT

★ CAFE AND RESTAURANTS

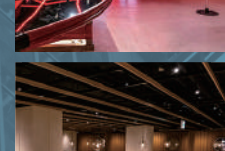


1F

★ TOKYO TOWER TICKET COUNTER

★ ELEVATOR TO THE DECKS

★ INFORMATION DESK



SOCIAL MEDIA Follow us!



DOWNLOAD THE MAP



RED x BOAT RACE

Marion Crepes

Stairs to the Main Deck

EXIT Information Desk

KEN'S CAFE TOKYO

ENTRANCE

Basement Entrance to the "Tokyo Tower hall"

Operation Center (Service Counter)

★ TOKYO TOWER TICKET COUNTER

Top Deck Tour Access

RED TOKYO TOWER

RED TOKYO TOWER

RED TOKYO TOWER

RED TOKYO TOWER

RED TOKYO TOWER

Nursery Room

Komori Sports Massage

TOWER GALLERY

OTAKARA ICHIBA

Photo Pick Up Counter

Parking lot (2F-South) Entrance/Exit

Information Desk 2F

TTA STORE

LAWSON-Convenience Store

31 Ice Cream

SAKE CAFE DIAMOND

SPALA (PASTA) / Pink dot

Tanbaya

UMEIYA PIZZA-LA EXPRESS

Food Court

TOKIO 333

Entrance/Exit

MOS BURGER

Tantamen Kinkatsu

Siddique Palace & Siddique Kebab (Pakistani and World Halal Cuisine)

RED SHOKUDO

Welcome Lounge

Coin Lockers

Elevators to the observation decks

EXIT Information Desk

Operation Center (Service Counter)

★ TOKYO TOWER TICKET COUNTER

Top Deck Tour Access

Operation Center (Service Counter)

★ TOKYO TOWER TICKET COUNTER

Top Deck Tour Access

Operation Center (Service Counter)

★ TOKYO TOWER TICKET COUNTER

Top Deck Tour Access